

Automatic analysis module of SBOS

Version 1.0

December 2020

Author : Zhuangzhuang Sun

Supervisor :

Regional Technique Innovation Center for Wheat Production, Ministry of Agriculture, Key Laboratory of Crop Physiology and Ecology in Southern China, Ministry of Agriculture, Nanjing Agricultural University, Nanjing, China

This package includes:

- (1) stomata.exe
- (2) model.h5
- (3) test.mp4
- (4) intro.mp4

This software can run on Windows 10 with a 64-bit Operating System, x64-based processor.

Table of contents :

1. Download files

2. Use the Graphical User Interface (GUI)

- 2.1 Open “stomata.exe”
- 2.2 Select the video file
- 2.3 Set up the parameter
- 2.4 Enter the path and name of results
- 2.5 Select the stomata of interest

1. Download files

Go to the address : <https://pan.baidu.com/download>

Click on 'Download' for Baidu cloud disk



Go to the link: https://pan.baidu.com/s/1IU3xw_g_aWGDYoiuQFbkeQ

Extraction code: SKV7

(If this link doesn't work, you can email me: 2020201018@stu.njau.edu.cn)

stomatal automatic analysis

2020-12-29 15:34 失效时间: 7天后

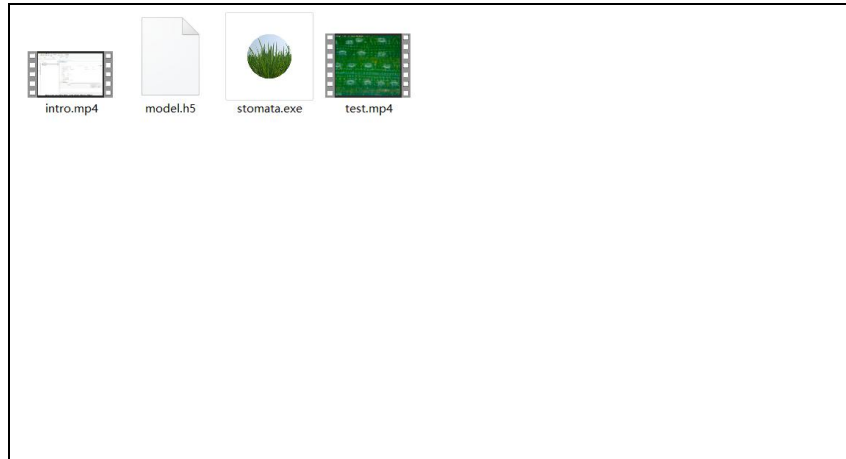
返回上一级 | 全部文件 - stomatal automatic analysis

<input type="checkbox"/>	文件名	大小	修改日期
<input type="checkbox"/>	test.mp4	32.3M	2020-12-29 14:50
<input type="checkbox"/>	stomata.exe	176.3M	2020-12-29 14:52
<input type="checkbox"/>	model.h5	24.3M	2020-12-29 14:49
<input type="checkbox"/>	intro.mp4	60.3M	2020-12-29 14:49

Download all files to your local computer.

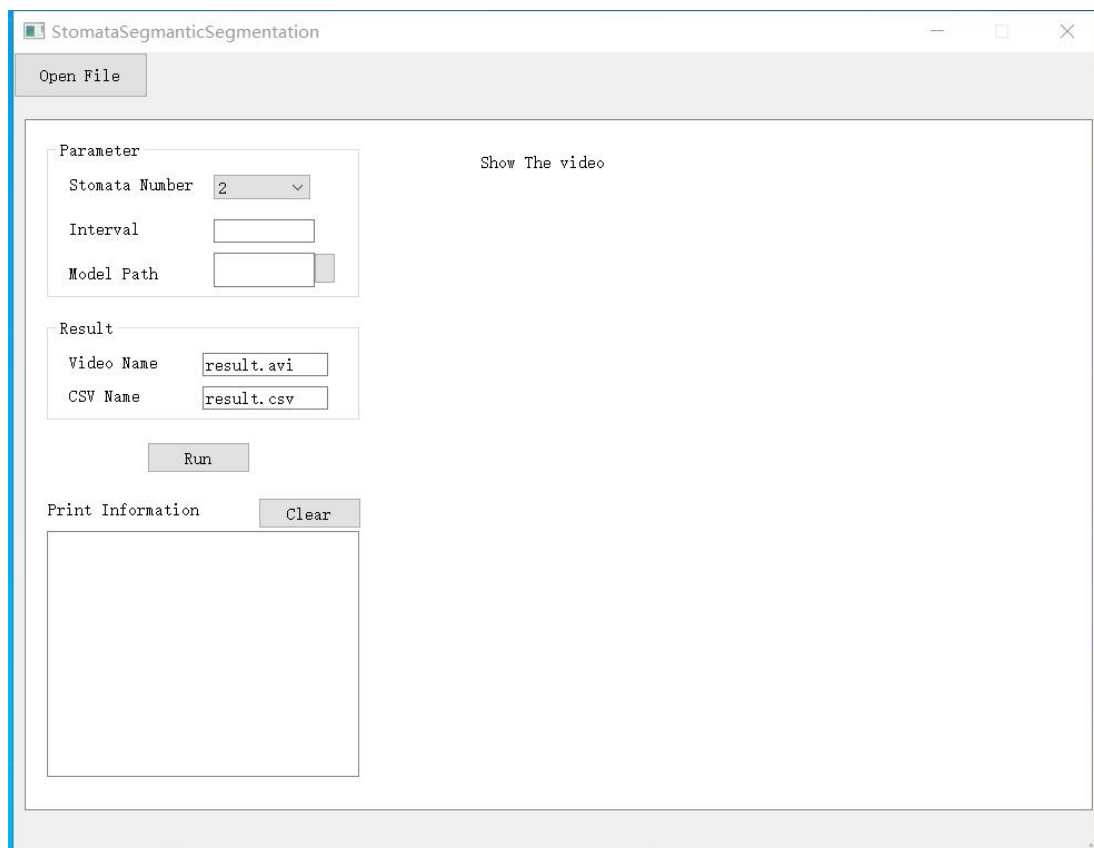
2. Use the Graphical User Interface (GUI)


2.1 open “stomata.exe”

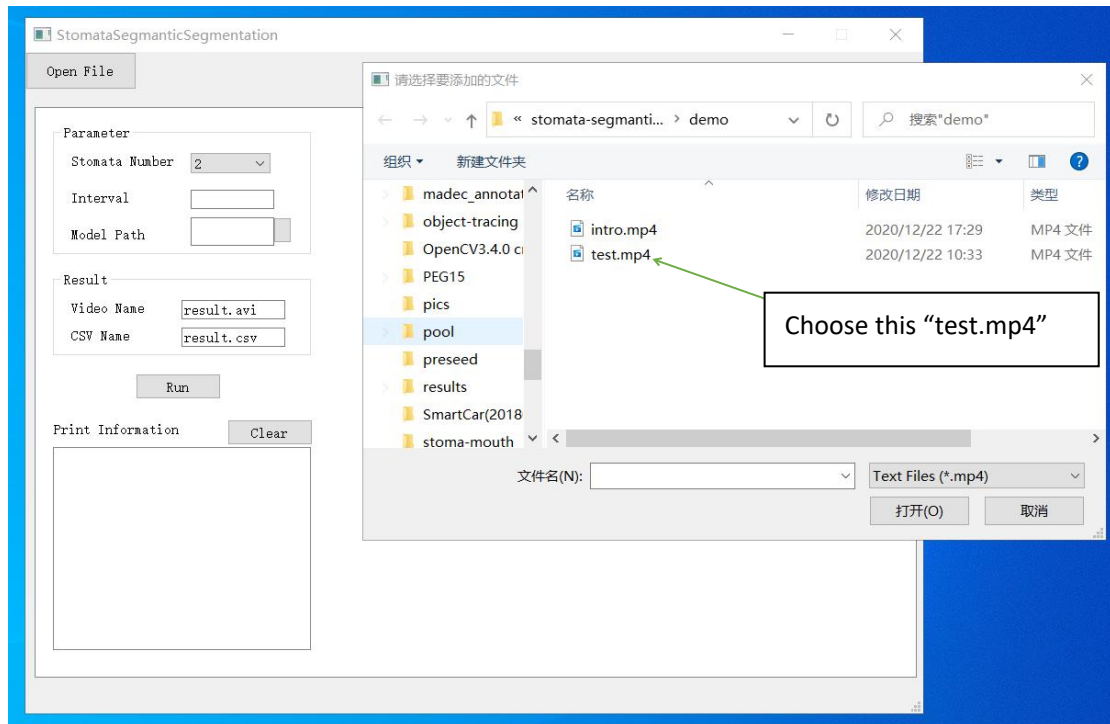


Click on “stomata.exe”, and you will see the GUI.

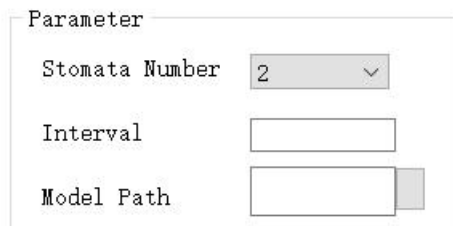
2.2 Select the video file



Click on the icon  at the top left corner and choose the video you want to test.



2.3 Set up the parameter

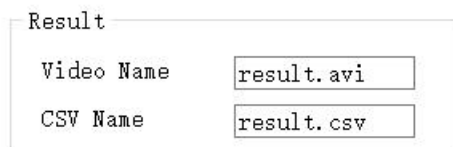


Stomata Number : the range is 2 to 10, and it represents the number of stoma you want to choose. Because the first box is used to select the time and date area, its minimum value is 2.

Interval: it represents semantic segmentation every n frames.

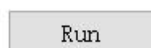
Model Path: select a semantic segmentation model. Here, we provide a model (model.h5) for testing.

2.4 Enter the path and name of results

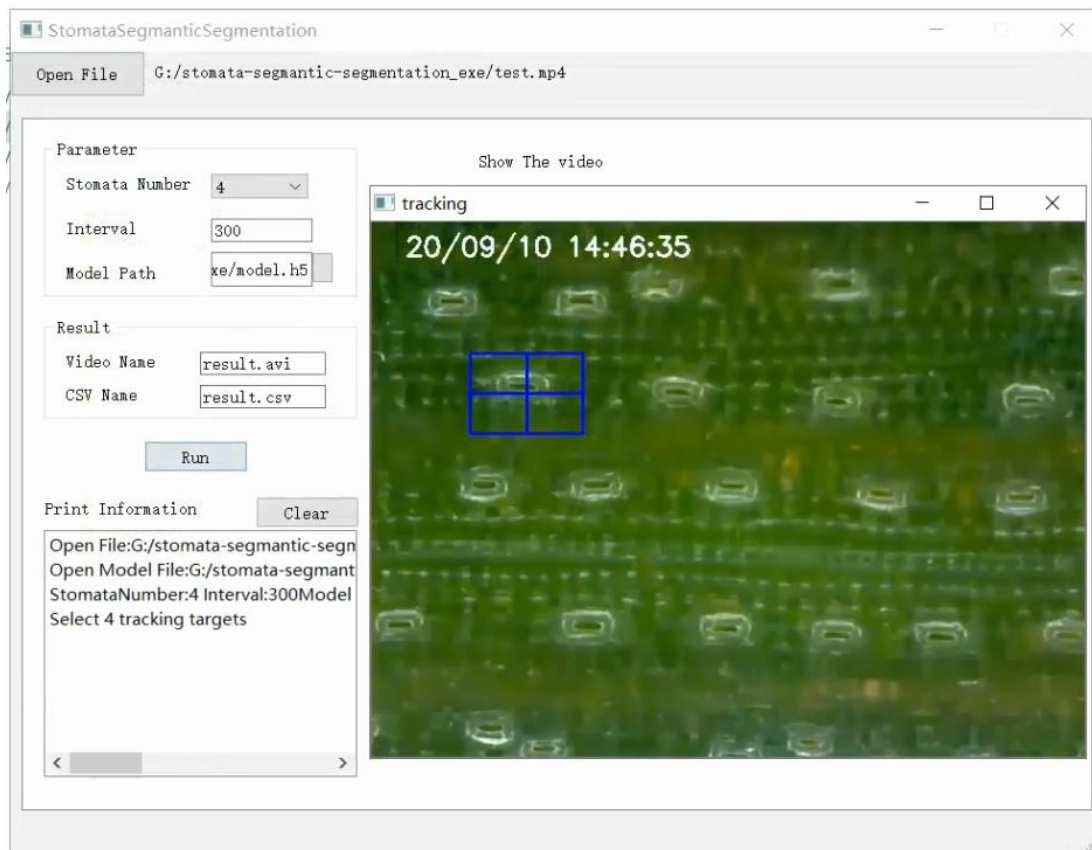


Modify the path and name of the output, and the default are “result.avi” and “result.csv”.

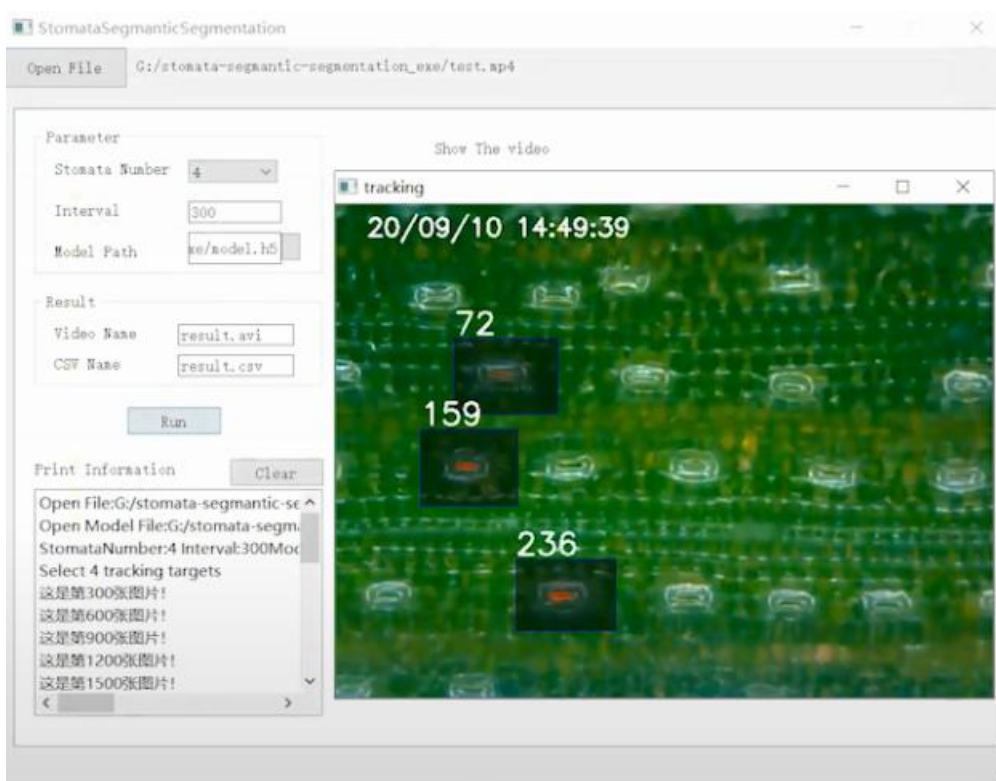
2.5 Select the stomata of interest



Click “Run” , and you can see the first frame of the video.



The first box must select the time and date area, and the other boxes choose the stomata of interest. After drawing a rectangle, press “Enter” on the keyboard to confirm.



When finished, the “.csv” file and the video file will be saved in the local folder.

